

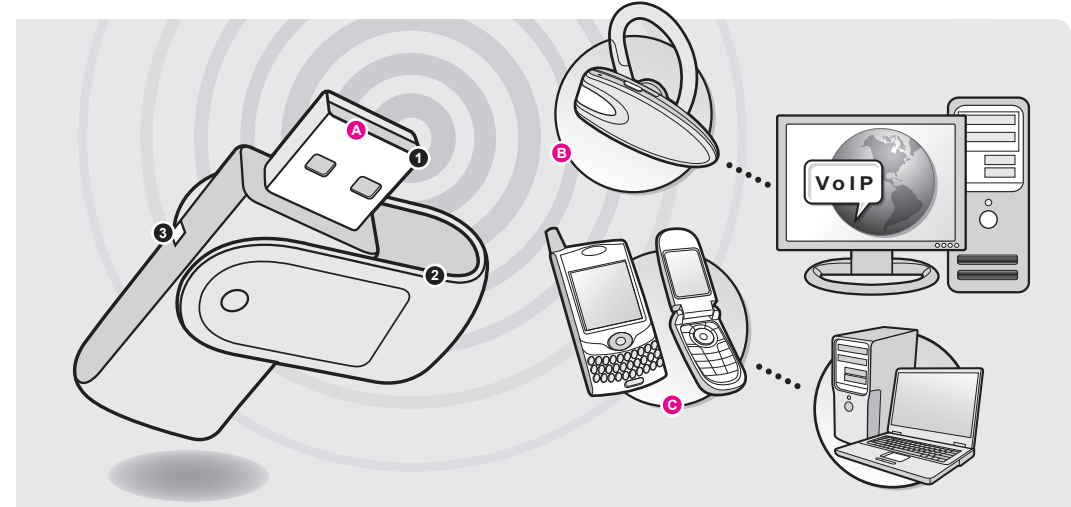


USB to Bluetooth® EDR (Enhanced Data Rate) 2.0 Adapter

Connect your Bluetooth® headset or cell phone to your PC or laptop

Features

- Compliant with Bluetooth® 2.0 EDR (Enhanced Data Rate) Class 2 specification
- Compatible with all Bluetooth® cell phones and headsets
- Supports Skype, Vonage, MSN, Yahoo, Google Talk and other VoIP softwares
- Faster data transfer rate - up to 3 Mbps
- Works up to 66ft (20 meters) in open space
- Compliant with USB 1.1 specification
- Enable PC for wireless VoIP calls (such as Skype®) with a Bluetooth® headset
- Pair up to 7 Bluetooth® enabled devices
- Eliminate cables within your PAN (Personal Area Network)
- Built-in 128-bit security for pairing, encryption, and authentication
- Supports the following Bluetooth® profiles: A2DP, AVRCP, BIP, Dial-up Networking, File Transfer, Fax, Generic Access, Generic Object Exchange, HCRP, HFP, HID, LAN, Object Push, PAN, Service Discovery Application, Serial Port, and Synchronization
- Limited 1 year warranty



- 1 Bluetooth® 2.0 EDR (Enhanced Data Rate) Class 2 specification
- 2 360° swivel cap
- 3 LED

- A Plug USB end into your desktop or laptop computer to upgrade to Bluetooth® 2.0
- B Enable your computer to make wireless VoIP calls with a Bluetooth® headset
- C Easily transfer data from your desktop or laptop computer through any Bluetooth® cell phone or smartphone

Specifications

Connector	1 x USB Type-A
Housing	Plastic
Operating Humidity	10% to 90%, non-condensing
Operating Range	33 ft (10 m)
Operating Temperature	-10°C~40°C (14°F~104°F)
Protocols	Bluetooth 2.0 EDR Class 2
Radio Frequency	2.402 GHz - 2.4835 GHz Unlicensed ISM band
Security	Pairing encryption and authentication
Storage Humidity	5% to 90%, non-condensing
Storage Temperature	-20°C~60°C (-4°F~140°F)
Unit Dimensions (L x W x H)	20 mm x 10 mm x 60 mm
Unit Weight	0.2 oz.

Requirements

- Windows 98SE, 2000, ME, XP & Vista
- Mac OS X v10.3.9 or later
- Available USB port

Package Contents

- USB to Bluetooth® EDR (Enhanced Data Rate) 2.0 Adapter
- Installation CD
- Quick Start Guide
- Warranty / Registration Card

